



04/25/25

Carriage House

A0.1

Carriage House

14575 W. 45th St. N.
Colwich, KS 67030

Permit #: TBD

Conditioned Volume

CUBIC FT	
2nd Trusses	TBD
2nd Floor	TBD
	TBD

Volume includes conditioned spaces both finished and unfinished. It also includes open to below areas. Initial build spec is fully unconditioned, so only relevant if loft is finished in the future.

Targets

THERMAL & AIR	
Slab	R 10
Framed Wall	TBD
Roof	TBD
Air Leakage	1 ACH50

WINDOW	
U Value	0.21
SHGC	< 0.4
VT	> 0.5
Air Infiltration	0.1

Contacts

Ryan Campbell
Homeowner / Project Lead
(813) 368-2494

Hanney & Associates
Architect / Consultant
(316) 683-8965

TBD
Structural Engineer
(000) 000-0000

Garber Surveying
Site Plan & Surveyor
(620) 665-7032

Project Scope

UNFINISHED SQFT	
1st Floor	1017
2nd Floor	573
	1,590

Material Estimates

Brick	0 sqft
Stone	108 lf
Shingles	1,658 sqft
Flatwork	1,026 sqft
Perimeter	138 lf
Windows	5
Doors	1
Gutters	92 lf

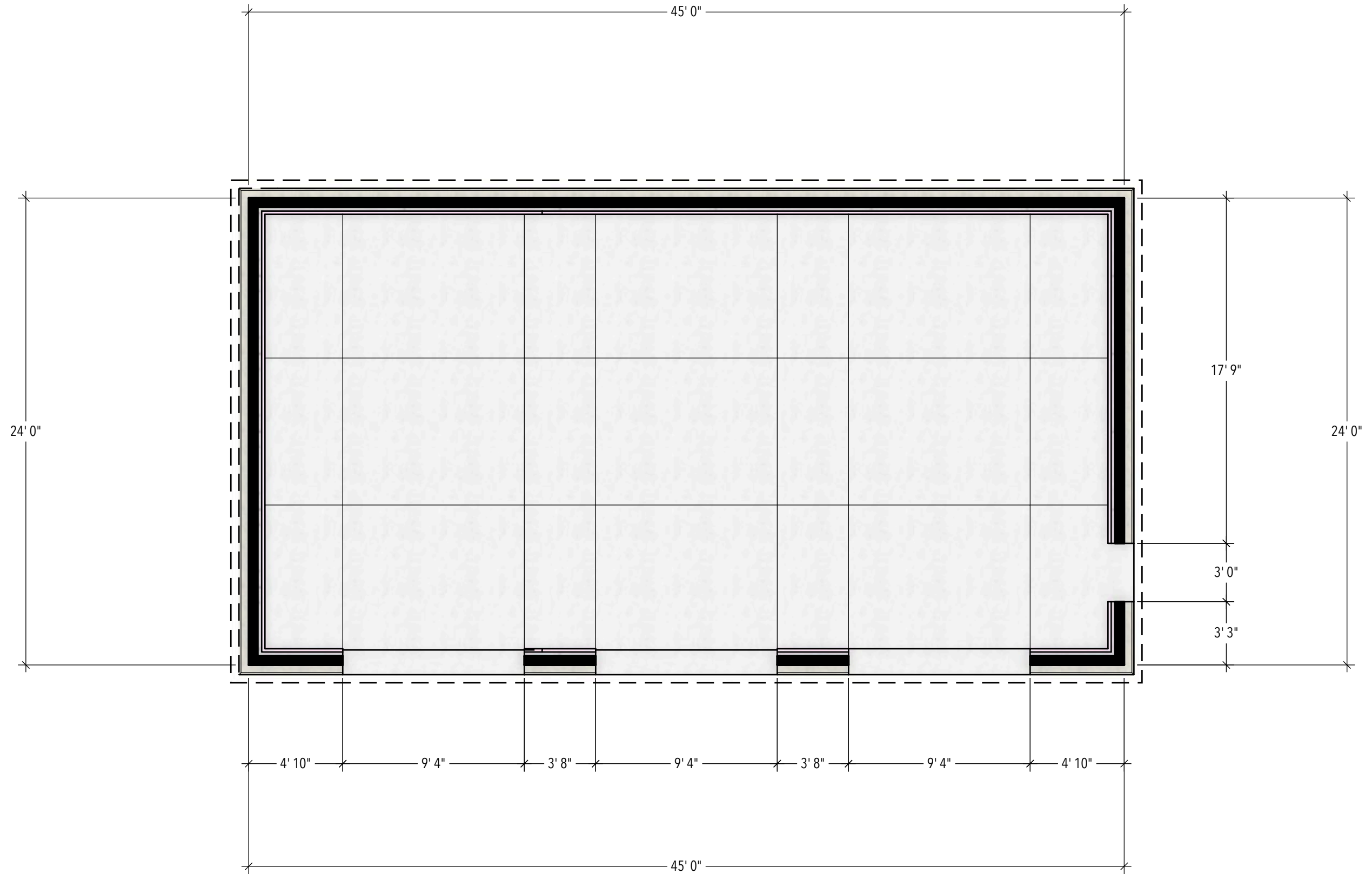
Material estimates are just **approximate** values that contractors can use to gauge the scale of the work. Not intended for final quotes.

STRUCTURAL

Deflection	L/480
Dead Load	15
Live Load	40
Roof Snow Load	20
Wind Load	115 / C
Site Class	D

Table of Contents

PAGE	CONTENTS
A0	Overview
A2	Plans & Schedules
A3	Elevations
A4	Assemblies
A5	Interior Elevations
A8	Exterior Details
A9	Interior Details
MPE2	Plans & Calcs

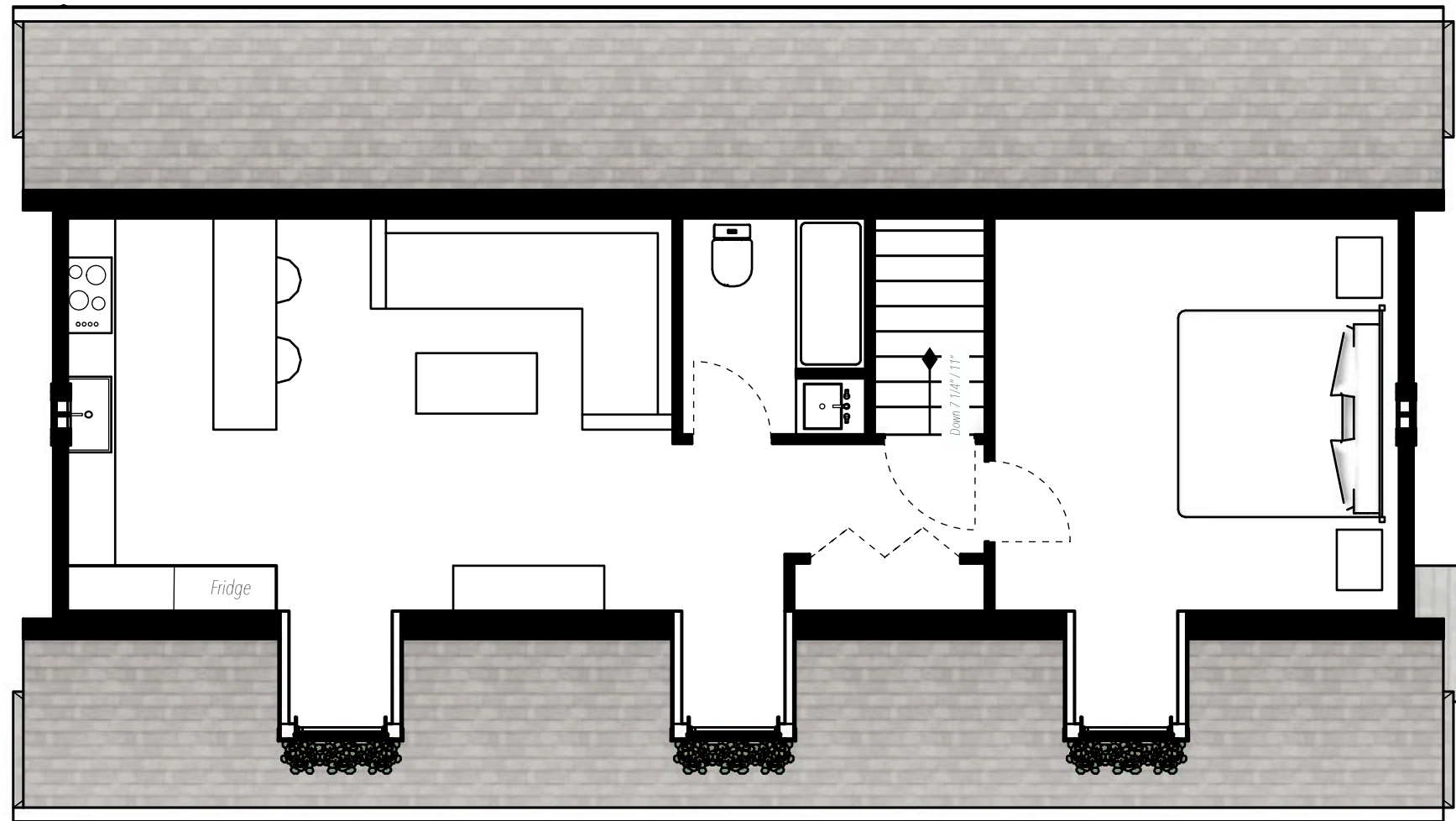


04/25/25

Foundation Plans

A2.1

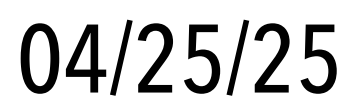




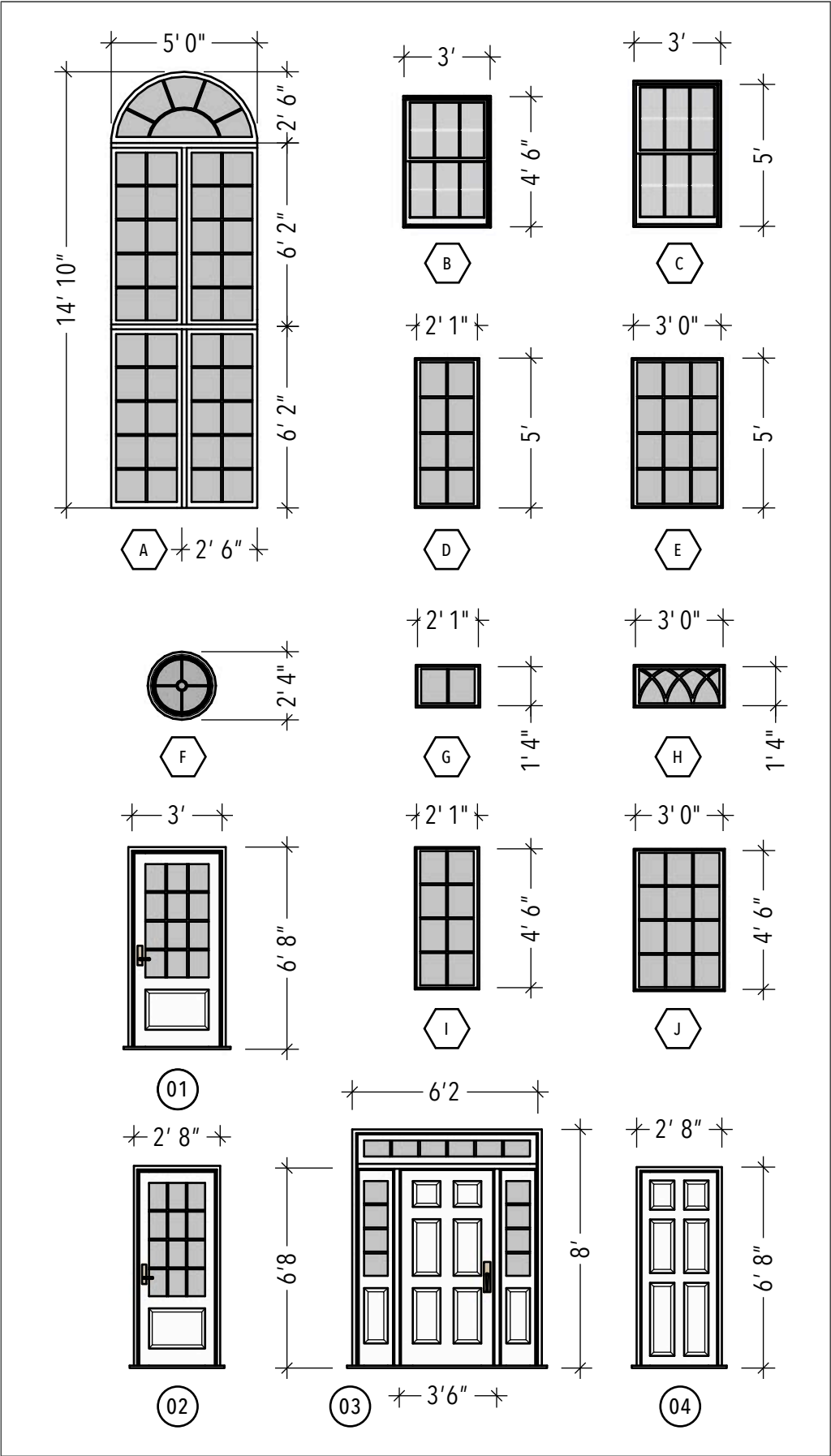
04/25/25

2nd Floor Plans

A2.3



A2.4

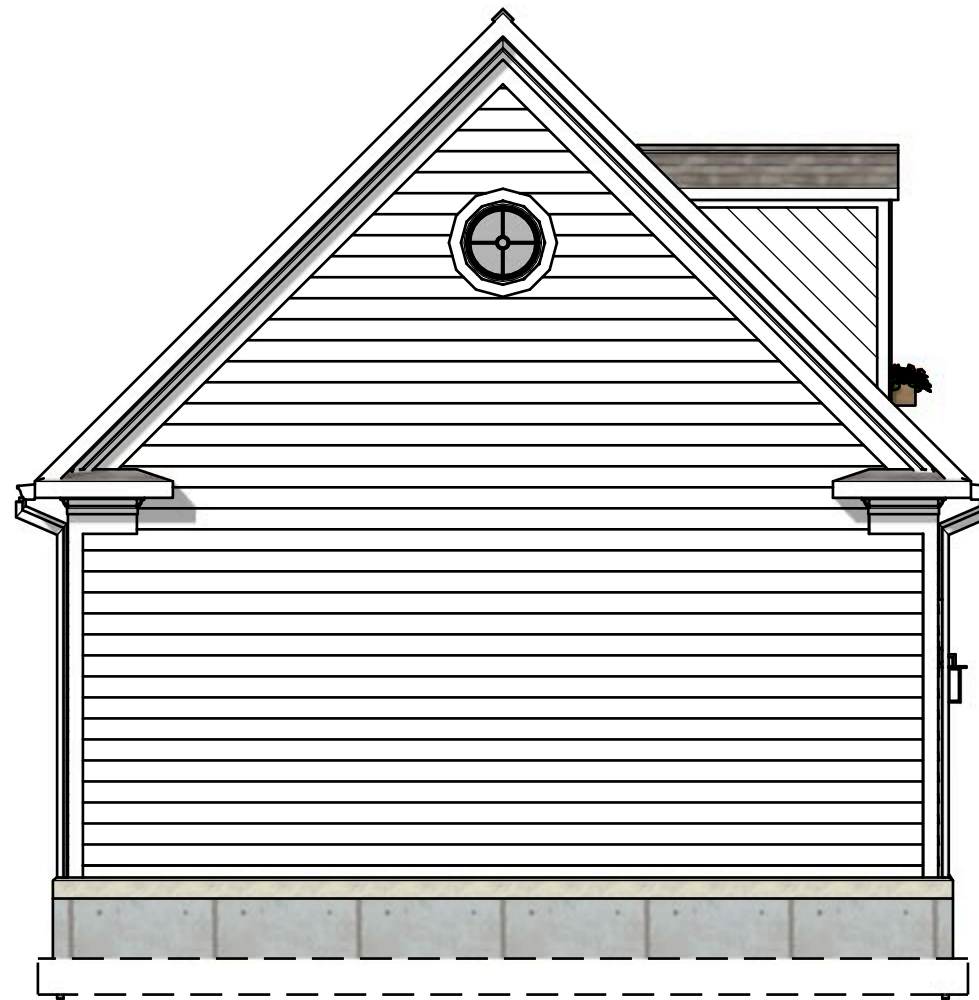


Windows					
	WIDTH	HEIGHT	STYLE	QTY	NOTES
F	2'4"	2'4"	Picture	2	
B	3'	4'6"	Double Hung	3	

See A3:Elevations for sill heights.

WINDOWS	SQFT	NORTH	SOUTH	EAST	WEST	NOTES
5						

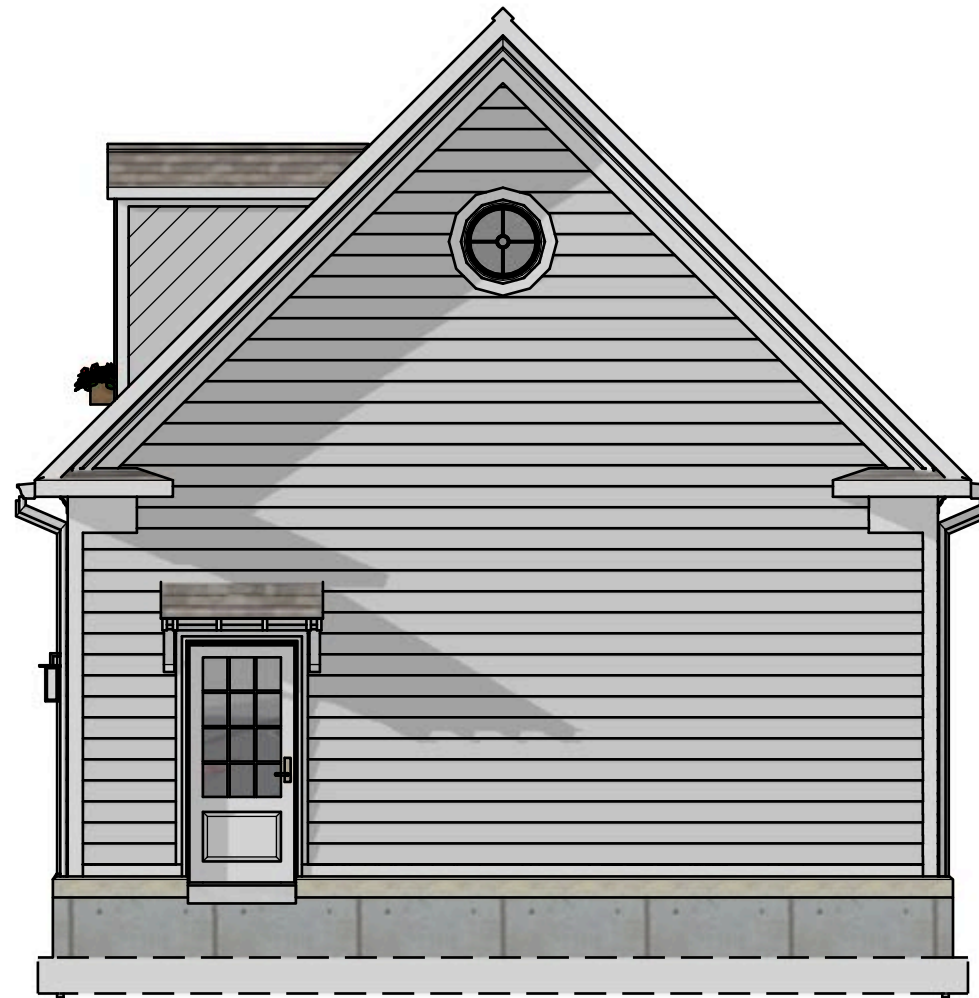
Doors					
	WIDTH	HEIGHT	SWING	QTY	NOTES
01	3	6'8"	Left	1	Try to match glass height with nearby window sills on these.



04/24/25

North Elevation

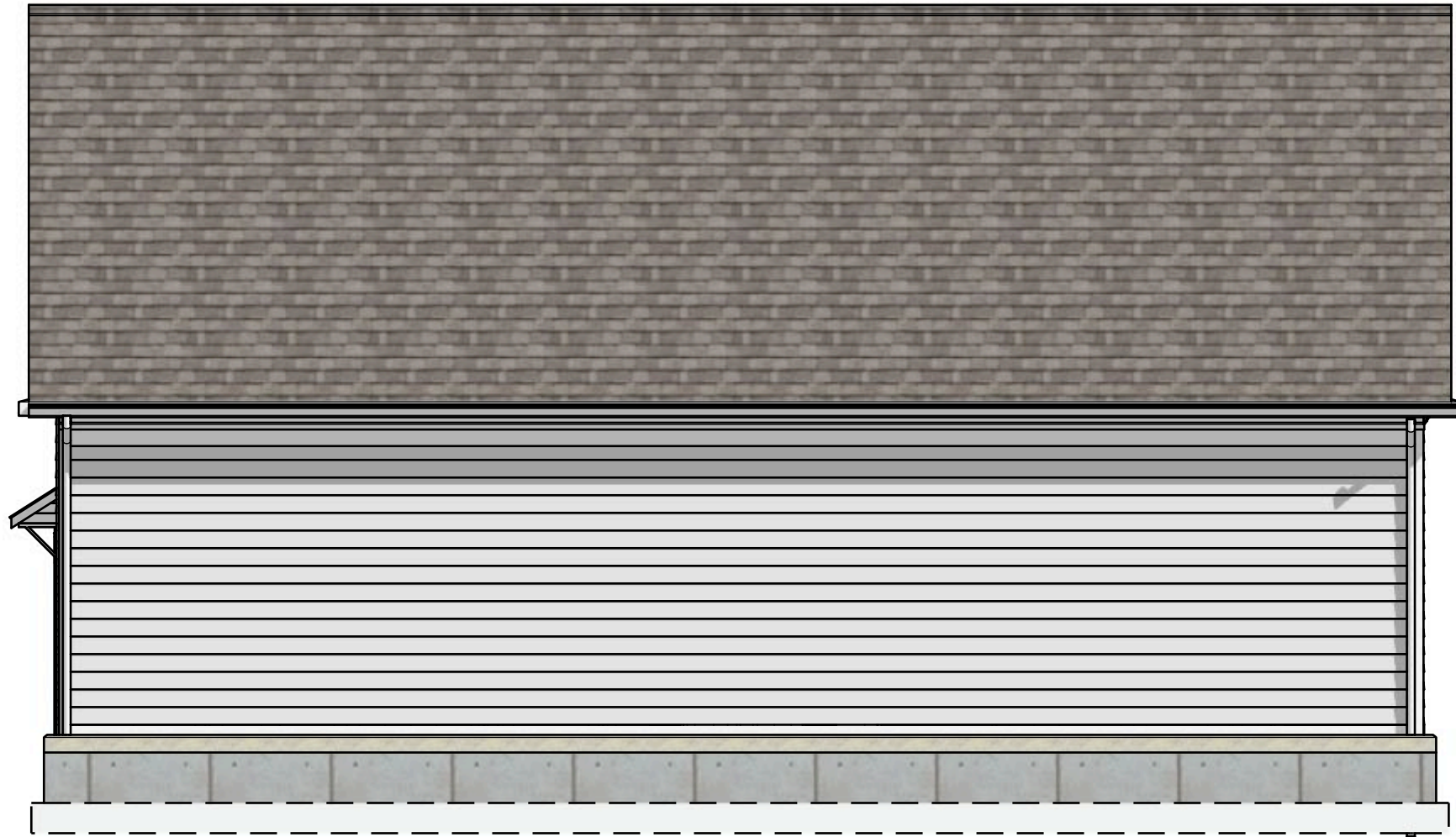
A3.1



04/24/25

South Elevation

A3.2



04/24/25

East Elevation

A3.3



04/24/25

West Elevation

A3.4